

# Determination

Marc Sabatella

A/C B/C Bmaj7#5/B $\flat$  (alternate bass note for head only)

F/G $\flat$  Ab/A B $\flat$ m11

B7#11 G $\flat$ maj7#11

F7 $\flat$ 13/G $\flat$

Ab/A G $\flat$ /G Db/D

C#/A B/G F#/D

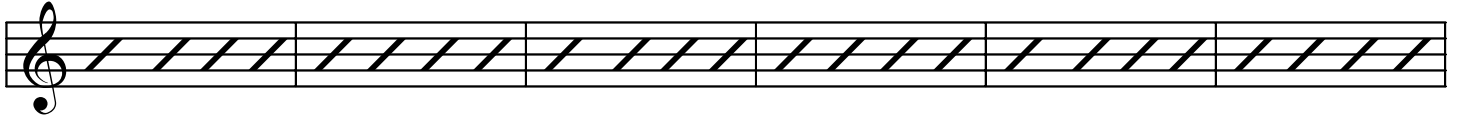
F7#9/A Eb7#9/G Cmaj7#11

Em7

B $\flat$ m7

Bmaj7 $\sharp$ 11

B $\flat$ m7



G $\flat$ maj7 $\sharp$ 11

F $7\flat$ 13/G $\flat$

